



**For any analysis request :**

- Contact a member of PAPPSO to discuss the scientific objectives.
- Complete the analysis request form that will be sent to you by PAPPSO.
- Send a photo or scan of the gel by Email in pdf format.
- Send the samples in a bubble mailer or in a box at the beginning of the week :

To the attention of : PAPPSO engineer in charge of the analysis

Facility at JOUY-EN-JOSAS :

INRA PAPPSO  
Bâtiment 526  
Domaine de Vilvert  
78352 Jouy en Josas, France

Facility at MOULON :

Génétique Quantitative et Evolution – Le Moulon  
INRA – Univ Paris Sud – CNRS – AgroParis Tech  
Ferme du Moulon  
91190 Gif-sur-Yvette, France

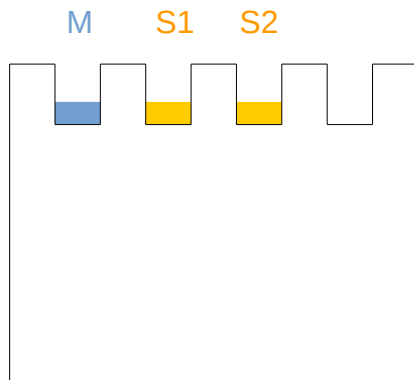
**At any time, feel free to :**

- Contact PAPPSO by mail or phone.
- Visit the facility's website : <http://pappso.inra.fr>



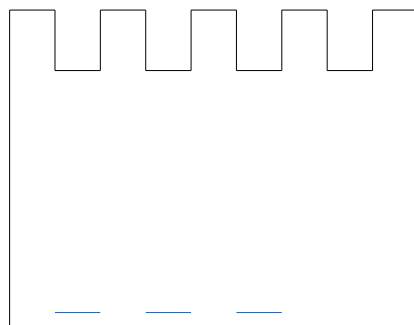
## Protein identification on 1D gel

Simple samples :  
Bands from long migration



### SAMPLES LOADING

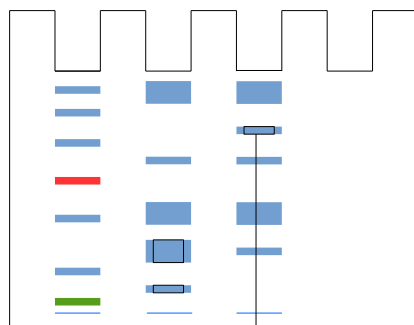
Load protein extracts  
(~10µg) on gel



### GEL MIGRATION

Short migration : allow the  
extracts to enter the gel for  
0,5 cm

Long migration : separate  
the proteins along the gel



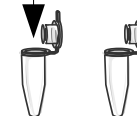
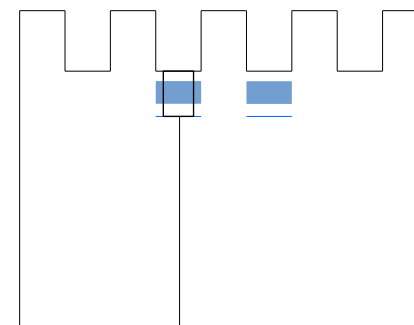
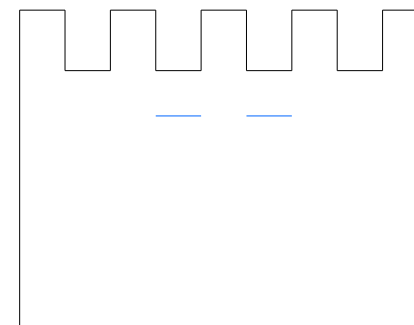
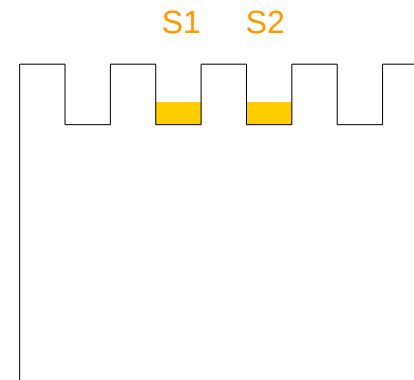
### BANDS CUTTING

Stain with colloidal  
coomassie blue G250 /  
destain the gel and cut the  
bands of interest to mm3



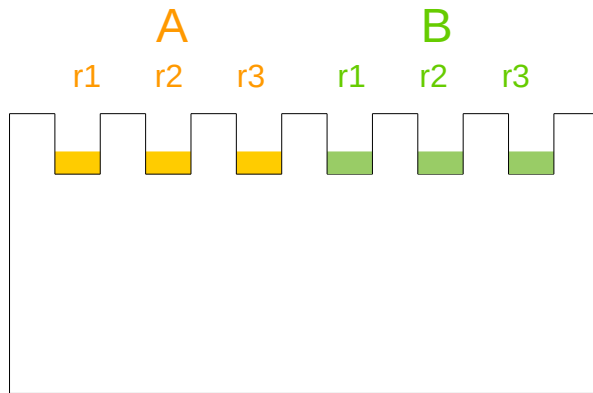
**SAMPLES SENDING**  
Transfer each band to a liquid-free  
tube and send it in a bubble mailer or  
a box.

Complexe samples:  
Bands from short migration



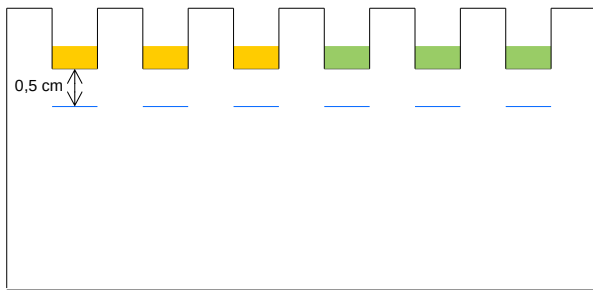


## Relative quantification of protein extracts on 1D gel



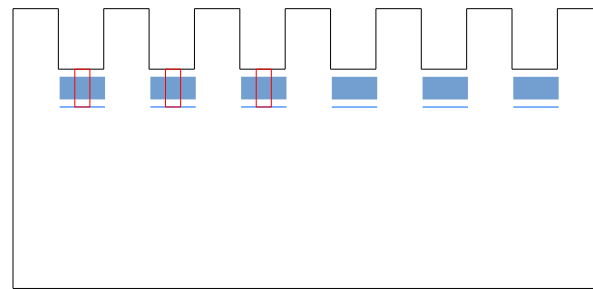
### SAMPLES LOADING

Load equivalent quantities of protein extracts (~10µg) on gel in a minimum of 3 replicates per condition



### GEL MIGRATION

Allow the extracts to enter the gel by short migration :  
on 0,5 cm in gradient gel  
(stacking gel : contact us)



### BANDS CUTTING

Stain the gel with colloidal coomassie blue G250 / destain and die-cut (same size) the bands containing protein extracts (overall migration)

### TUBE OR PLATE TRANSFERING

Transfer each band to a liquid-free tube or each cube in a liquid-free plate microtube

Small series :  
In tube

Re-cutting the bands  
into cubes (~2mm)

Large series :  
In plate

Specific plate supplied by PAPPSO

